

# Angelfish Genetics Joint Release 5<sup>th</sup> July 2009

The New Society for Angelfish Standards in Conjunction with The British Angelfish Association and The World Angelfish Forum Presents

## THE PHILIPPINE BLUE GENE (pb)

The New Society for Angelfish Standards, The British Angelfish Association and The World Angelfish Forum *welcomes and accepts* the first Major change to Angelfish Genetic Standards since Dr Norton's work.

### THE PHILIPPINE BLUE GENE (pb)

*Up until recently, and causing some confusion, this gene had been referred to as Platinum Blue.*

*To reduce confusion between genotype and phenotype naming, the Developing Breeder of these fish, Ken Kennedy of the Philippines, has now requested that name be changed to Philippine Blue.*

*Platinum Blue should no longer be used as the name for the pb gene.*

In its homozygous form pb/pb the Philippine Blue gene codes for blue color or iridescent blue and where possible the phenotype name "BLUE" should be used as the preferred name for most of the fish it is bred into. (See the list below)

Hence where some were calling +/+ - pb/pb Platinum Silver or Platinum Blue it should be referred to now as Blue Silver, similarly a fish which carries Sm/Sm - pb/pb should be referred to as a Blue Chocolate.

A fish that carries both the Gold and Philippine Blue genes in homozygous form g/g - pb/pb expresses as a white shiny platinum looking fish and **should still be referred to as Platinum.**

Similarly, any fish crossed with a Platinum g/g - pb/pb should still retain the word Platinum in its Phenotype name. That is, a Platinum crossed with a Zebra g/g - pb/pb - Z/+ should be referred to as a Platinum Zebra.



Platinum g/g - pb/pb

**note – the title Platinum Blue should not be used in any combination to describe the phenotype of a fish.**



Pinoy Clown - Green Iridescence  
AngelKisses Hatchery - Ohio



Pinoy Ghost - Ken Kennedy



Pinoy Paraiba Cross – Ken Kennedy

For further details and lists of preferred phenotype names involving Angelfish that carry the Philippine Blue gene in its homozygous form pb/pb please refer to the list below or ,

\* The New Society for Angelfish Standards

[peterbottle@hotmail.com](mailto:peterbottle@hotmail.com)

\* The British Angelfish Association  
<http://www.tbaa.org.uk>

\*The World Angelfish Forum  
[www.angelfishkisses.com](http://www.angelfishkisses.com)

\* The Angelfish Locus Newsletter  
[www.angelfishlocus.com](http://www.angelfishlocus.com)

### Phenotype names with genotype

Blue Silver (+/+ - pb/pb)

Blue Ghost (S/+ - pb/pb)

Blue Zebra (Z/+ - pb/pb) or (Z/Z - pb/pb)

Blue Smokey (Sm/+ - pb/pb)

Blue Chocolate (Sm/Sm - pb/pb)

Blue Marble (M/M - pb/pb) or (M/gM - pb)

Platinum (g/g - pb/pb)

Platinum Marble (gM/gM - pb/pb) or (gM/g - pb/pb)

Paraiba (S/S - pb/pb)

Paraiba Smokey (S/S - pb/pb - Sm/+)

Paraiba Chocolate (S/S - pb/pb - Sm/Sm)

Paraiba Sunset (g/g - S/S - pb/pb)

Paraiba Koi (Gm/g - S/S - pb/pb) or (gM/gM - S/S - pb/pb) can not call this blue koi.

Paraiba Blue Koi (+/Gm - S/S - pb/pb)

**Pinoy Angelfish may carry a number of dark gene combinations.**

**Pinoy (D/+ - pb/pb) or (D/g - pb/pb) or (D/D - pb/pb)**

**Pinoy Ghost (D/+ - pb/pb-S/+)**

**Pinoy Zebra (D/+ - pb/pb-Z/+)**

**Pinoy Clown (D/+ - pb/pb - S/Z)**

**Pinoy Smokey (D/+ - pb/pb - Sm/+)**

**While the Philippine Blue gene in it's homozygous state pb/pb will code for blue color and heightened iridescence, in it's heterozygous form +/pb it will not.**

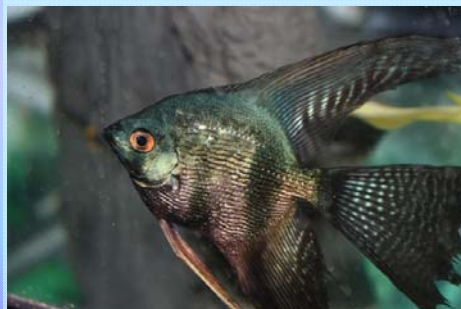
*A team from the University of Akron Ohio headed by Dr Matt Shawkey, with Dr Liliana D'Alba is conducting a study into the Philippine Blue gene and how it affects structural color in the fish*



Pinoy



Pinoy Paraiba Veil Pearlscale - Ken Kennedy



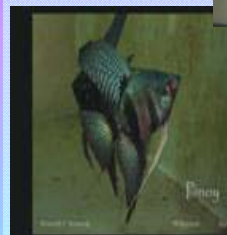
Pinoy Clown Pearlscale Veil - Angel Kisses Hatchery NE, Ohio



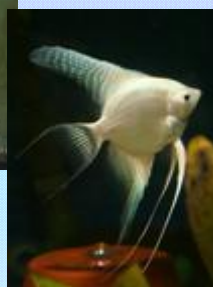
Blue Albino Pearlscale  
Angel Kisses Hatchery NE Ohio



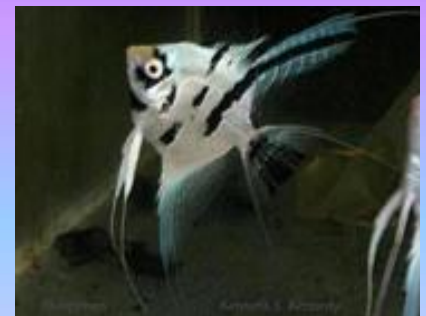
Paraiba



Wide Fin (WiFi) Pinoy



Platinum g/g - pb/pb



Blue Marble